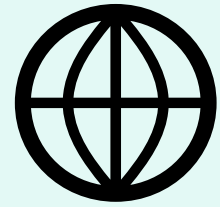


COMMUNITY SOLUTIONS TO CLIMATE CHANGE CHALLENGES

THURSDAY, OCTOBER 19TH | 3:00PM ET / 12:00PM PT



Ways to Engage



Click the globe interpretation icon to select your language:

- English or Spanish (audio)
- American Sign Language (video)



Click the "Live Transcript" button to enable closed captioning



Use Zoom Q&A to ask a question



Slides will be posted to our webpage



Poll and survey will be shown at the end of the webinar



Webinar recording will be posted to our webpage

Today's Speakers



Kendra Beaver

Climate Justice
Coordinator

**Fairmount Indigo CDC
Collaborative (FICC)**



Gary Cohen

President &
Co-Founder

Health Care Without Harm



David Padgett, PhD

Associate Professor of
Geography and
Director of Geographic
Information Sciences

Tennessee State University



Jacquelyn Dalton, MPH

Director

**Health Leads | Vaccine
Equity Cooperative**

Webinar Objectives

- Introduce the connection between climate change and health equity, both current and future impacts;
- Highlight bright spot examples from the CBOs creating local climate equity solutions right now; and
- Share resources tools used nationally and locally to address health inequities caused by climate change.

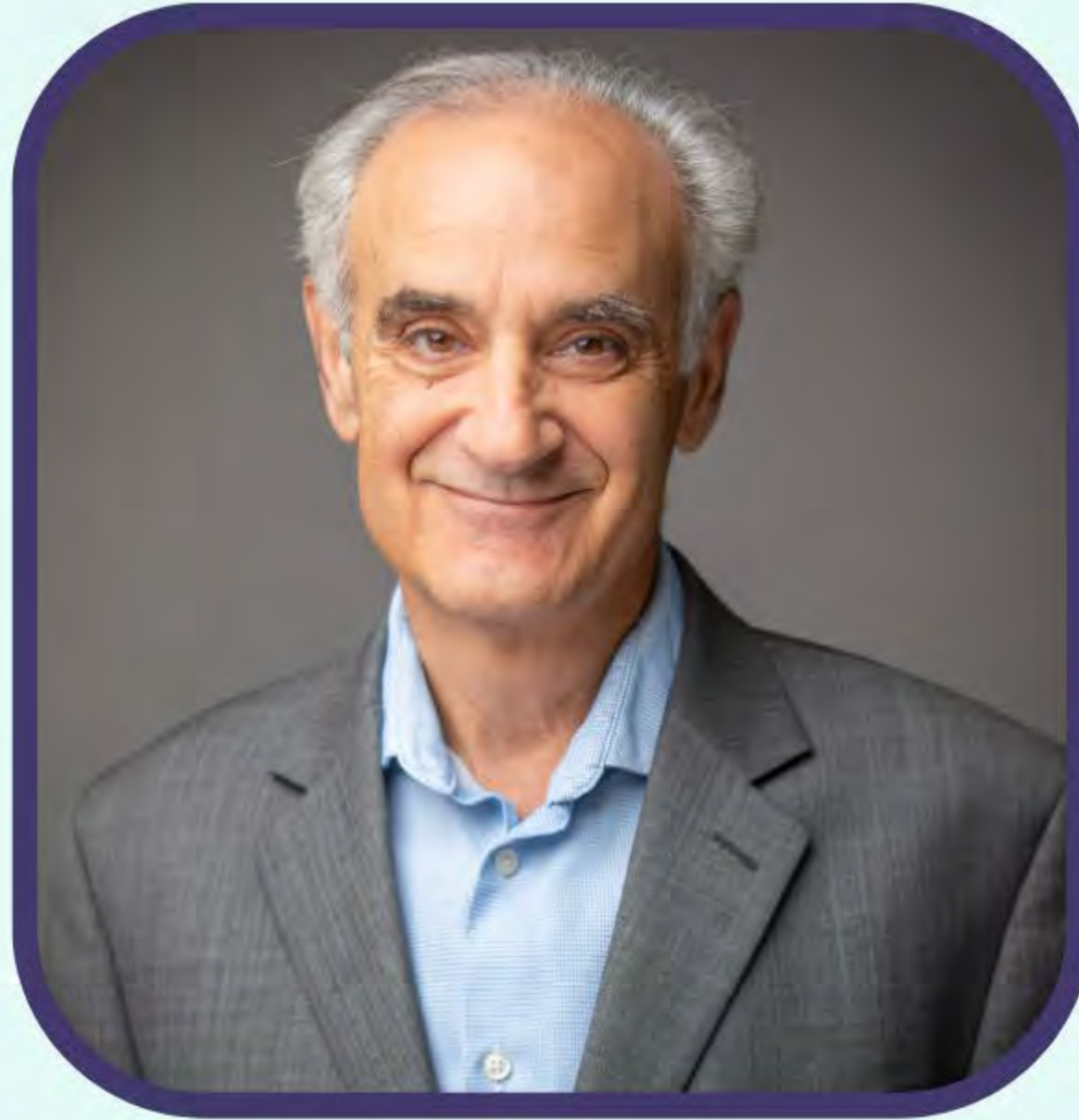


Climate Change and Health Equity



Gary Cohen
President & Co-Founder
Health Care Without Harm

Climate Change and Health Equity



Gary Cohen
President & Co-Founder
Health Care Without Harm



stunted growth
among CHILDREN

ALLERGIES

asthma

CLIMATE CRISIS IS A HEALTH CRISIS

malnutrition

MALARIA

FLOOD

heart stroke

WILDFIRES

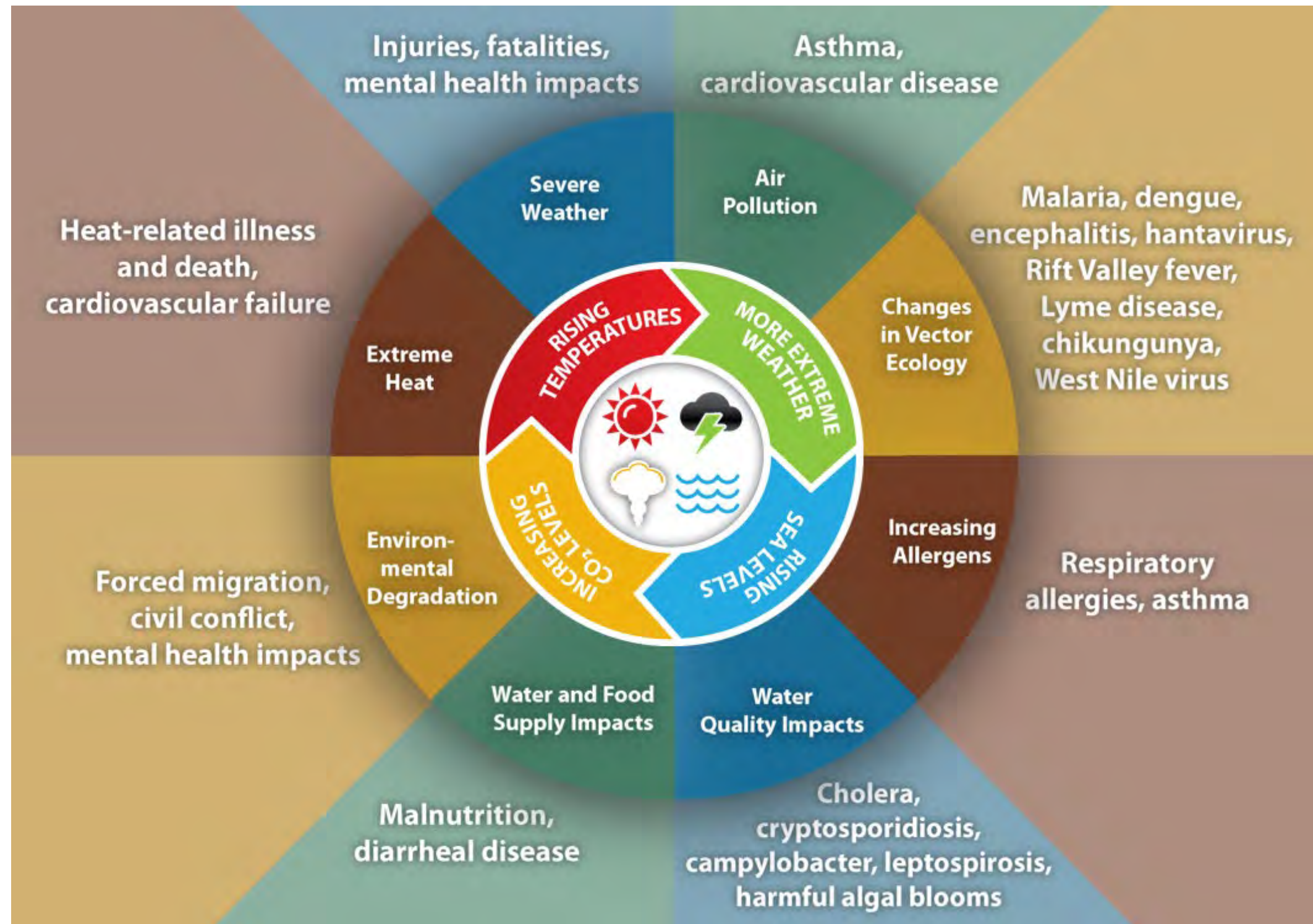
cardiovascular disease

HUNGER


depression

VECTOR BORNE DISEASE

The health impacts of climate change are numerous, severe & prolific



Source: *The Centers for Disease Control and Prevention (CDC)*



Over **8** million
people died from fossil fuel
pollution in 2018 worldwide

Vohra, Karn, et al. *Global mortality from outdoor fine particle pollution generated by fossil fuel combustion: Results from GEOS-Chem*, *Environmental Research*, February 2021.



CLIMATE CHANGE IS EXACERBATING INEQUALITY

Like COVID-19, climate change does not impact all people equally. The same economic and health inequities that have led to much higher death rates and serious illness from COVID-19 among people of color, the poor, those with disabilities, and the elderly are replicated with climate change.



Certain populations are at greater risk of climate-related health impacts

Black people are three times more likely to die from polluted air than the population average in the U.S., and they are more likely to be affected by asthma or heart and lung conditions

Nineteen million people live in hotspots of high flood risk, which are clustered in rural parts of Southern states. **People living in these rural areas** tend to be medically underserved with limited access to health services

People with disabilities are two to four times more likely to die or be injured in climate emergencies, including heatwaves, hurricanes, and floods

During Hurricane Katrina in 2005, 71% of the 1,800 deaths in Louisiana and Mississippi were **people over the age of 60**

Between 2004 to 2018, **American Indian and Alaska Native people** had the highest rates of heat-related death, followed by Black people

With 2°C (3.6°F) of global warming, **Hispanic and Latinx people** are 43% more likely to live in areas with the highest projected reductions in labor hours due to extreme temperatures

People with chronic conditions are particularly vulnerable to disasters since they can suffer an interruption in their care, leading to life-threatening conditions and complications

LGBTQ+ people suffer higher rates of chronic diseases associated with environmental exposures, such as respiratory diseases, cardiovascular disease, and cancer

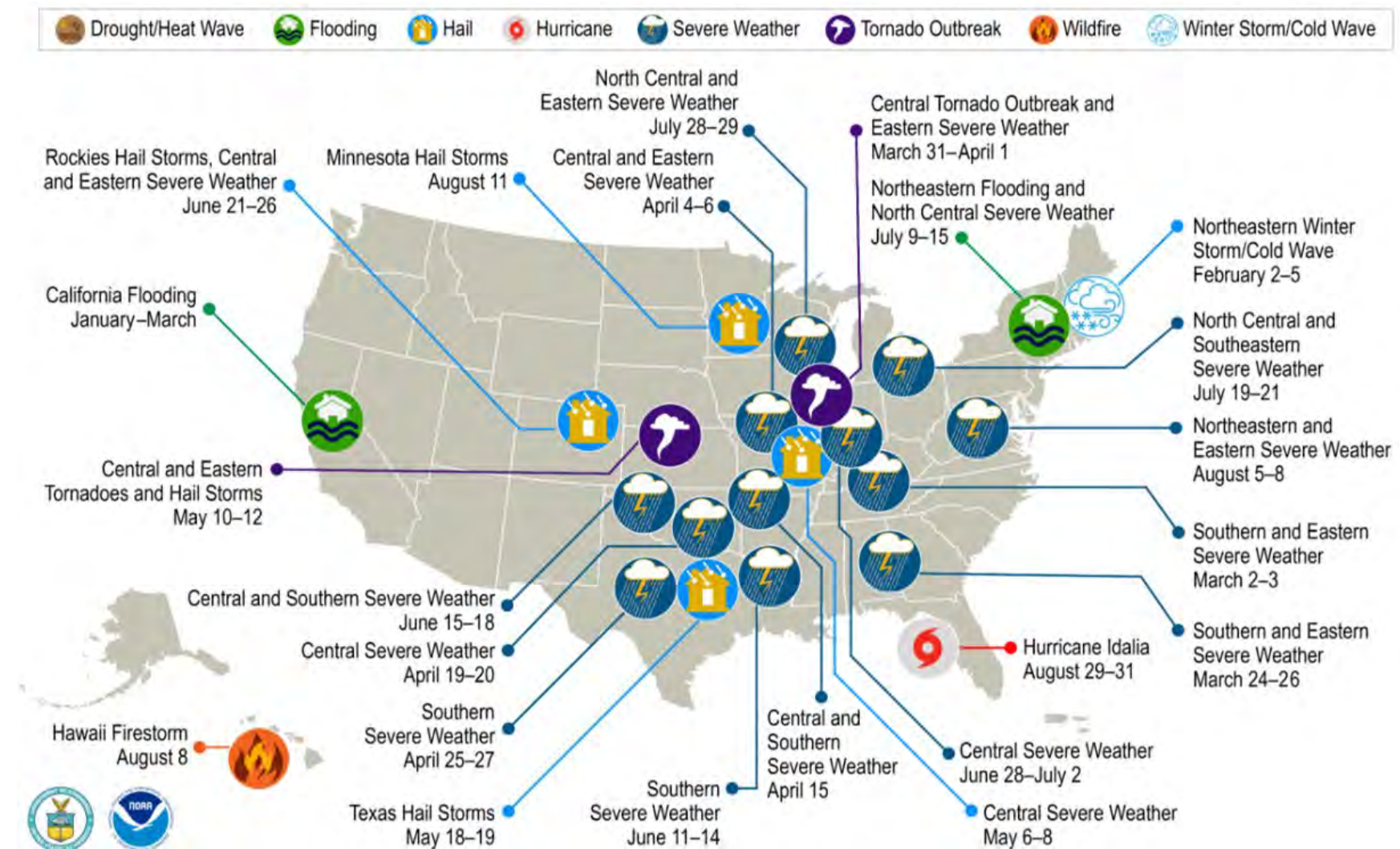
Learn more: [New England Journal of Medicine, The Climate Gap and the Color Line — Racial Health Inequities and Climate Change](#)

Among other impacts, climate change is leading to more frequent and more severe emergencies

More than half of HHS declarations of public health emergencies in 2023 have been related to extreme weather/natural disasters (5 out of 9)

Source: [ASPR](#)

In 2023 (as of Sept. 11), there have been 23 billion-dollar weather and climate disasters in the U.S.



Source: [NOAA](#)



Photo Credits: Press Trust of India



As the only sector with healing as its mission, health care has an opportunity to use its ethical, economic, and political influence to create ecologically sustainable, equitable, and healthy communities.

Health Care Without Harm's impact and reach

1996

Health Care Without Harm works to transform health care worldwide so that it reduces its environmental footprint, becomes a community anchor for sustainability, and becomes a leader in the global movement for environmental health and justice.

82 countries

Our reach includes 65,000 hospitals in hospitals and health centers in 82 countries worldwide.



HEALTH CARE'S CLIMATE FOOTPRINT

HOW THE HEALTH SECTOR CONTRIBUTES TO THE GLOBAL CLIMATE CRISIS AND OPPORTUNITIES FOR ACTION



ARUP

Health Care Without Harm
Climate-smart health care series
Green Paper Number One

Produced in collaboration with Arup
September 2019

HEALTH SECTOR EMISSION PARADOX

Health sector is responsible for 5% of net global emissions. This means that if healthcare were its own country, it would be the 5th largest carbon emitter on the planet.

Energy

Building

Transport

Operational Emissions

Pharmaceuticals and Waste

U.S. health care's footprint is 25% of global healthcare's emissions

Health Care emissions in the U.S. account for 8.5% of the nation's footprint*

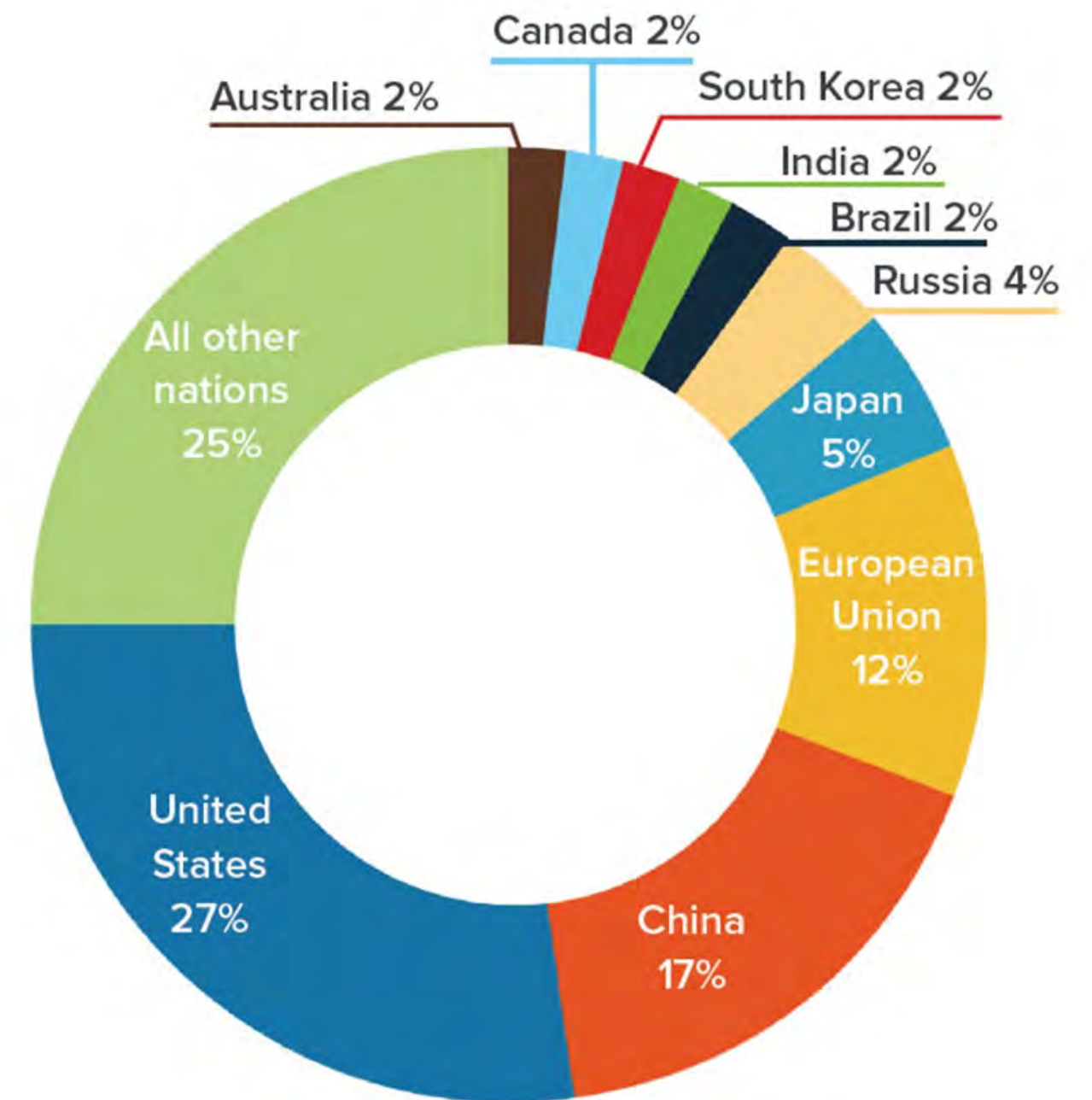
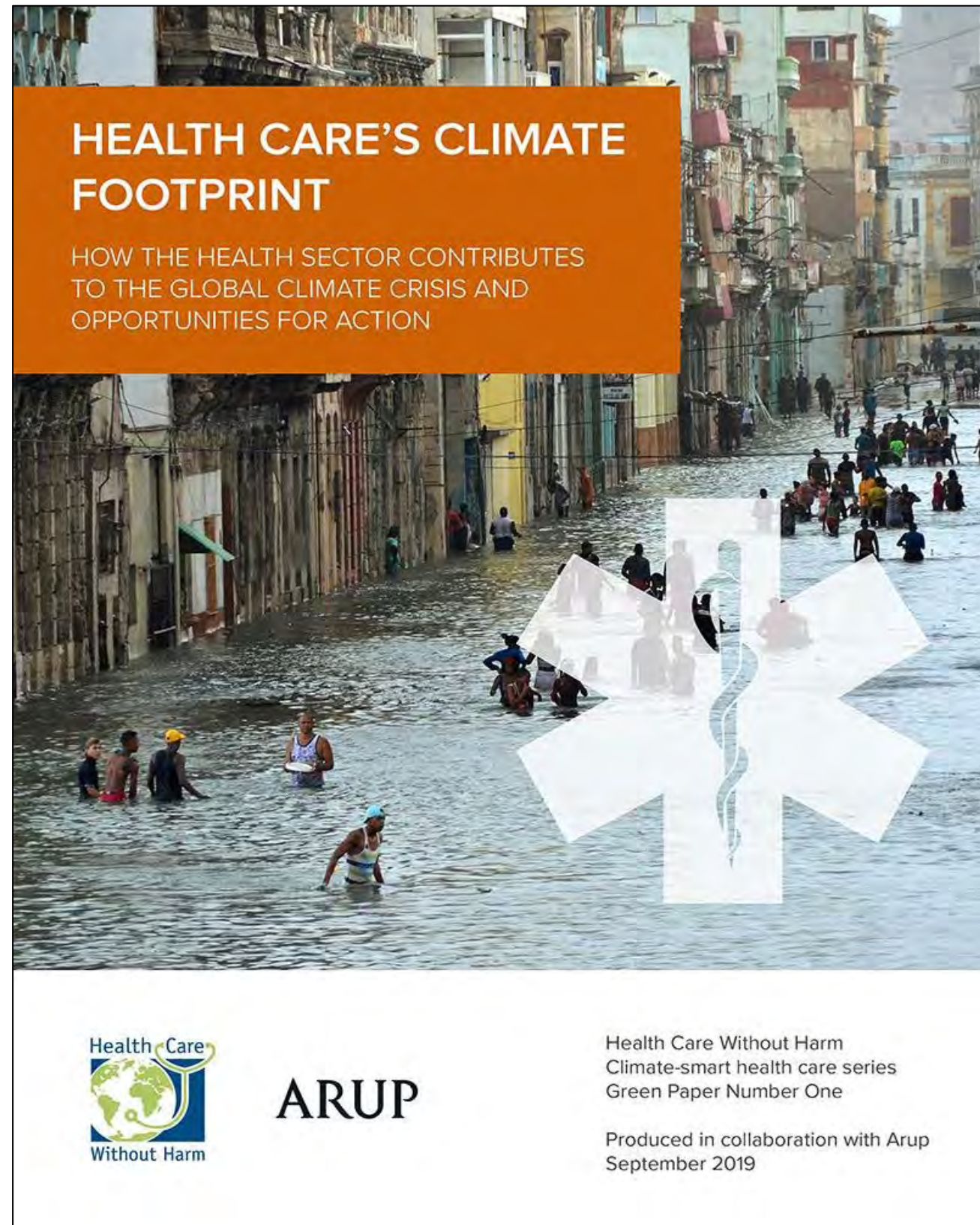
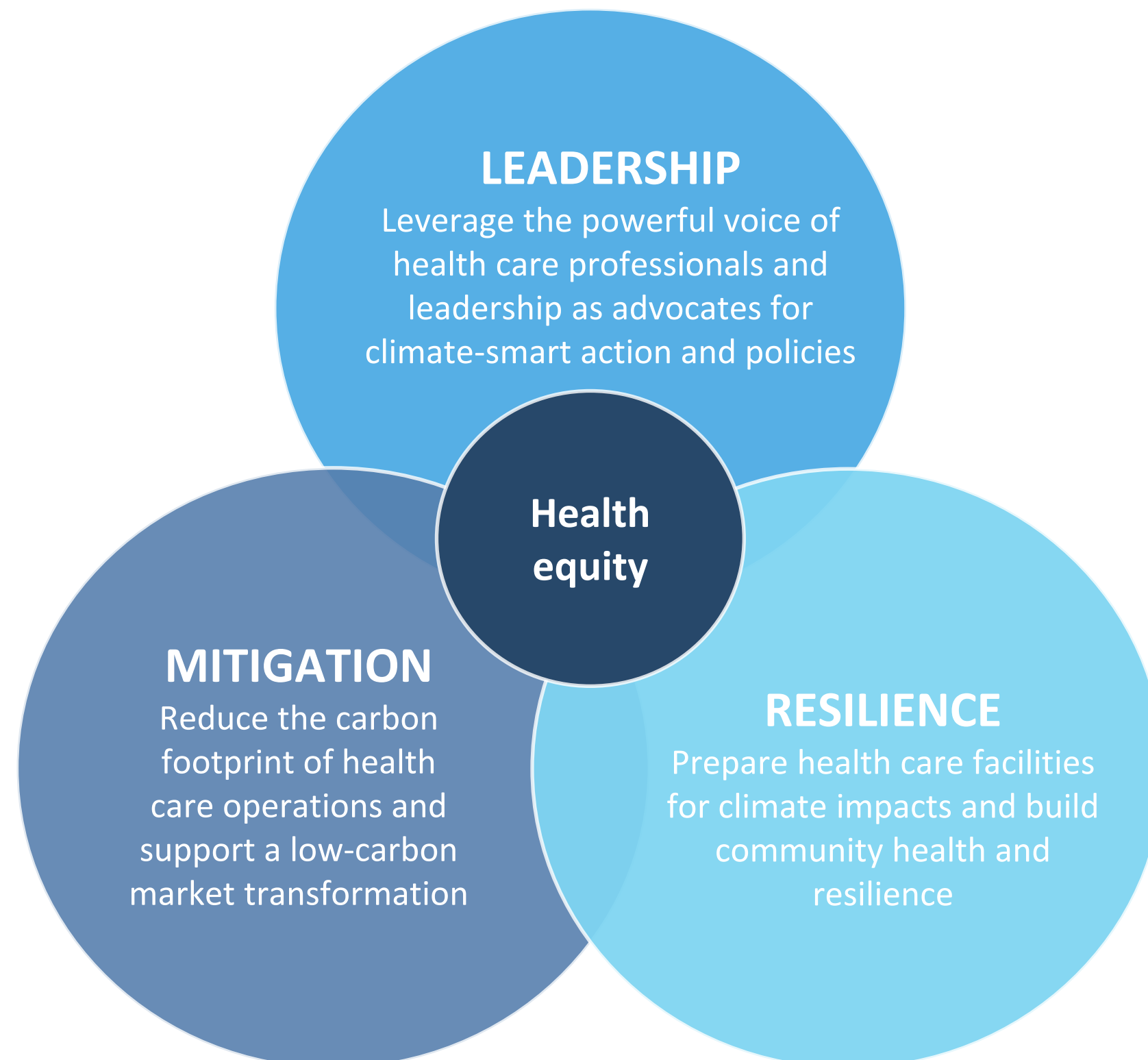
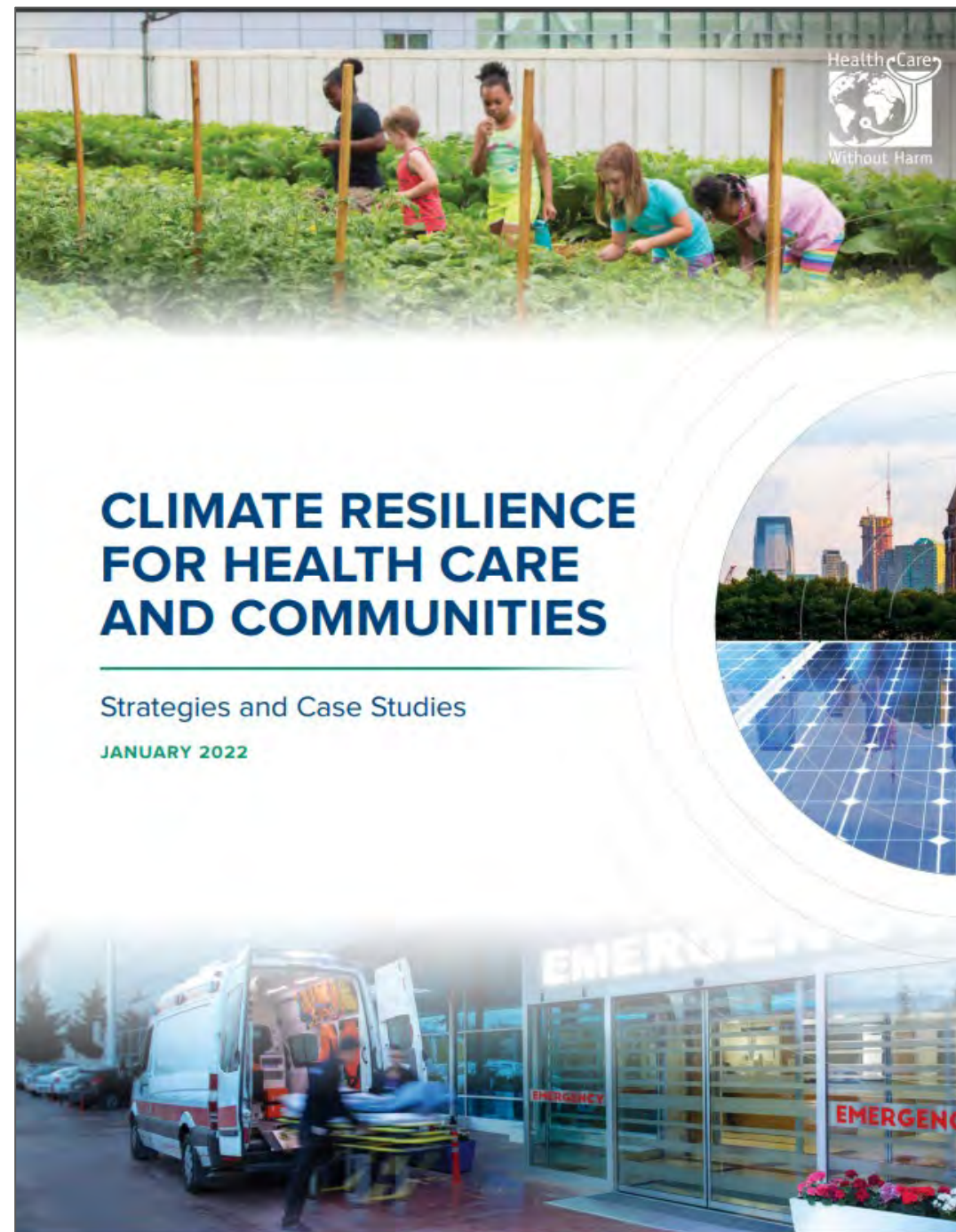
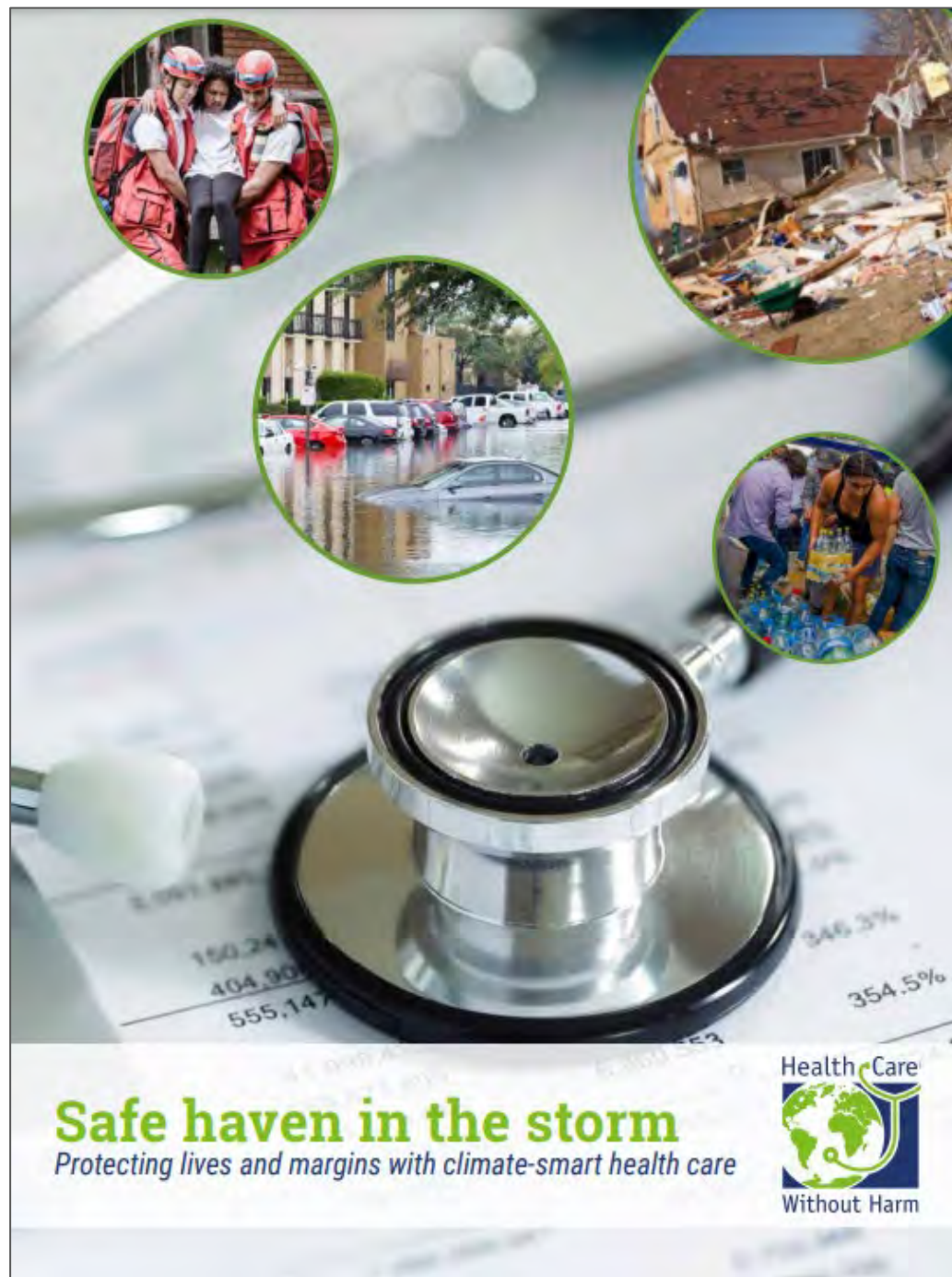


Figure 8: Top ten emitters as percentage of global health care footprint.

*Eckelman et. al. *Health Care Pollution and Public Health Damage in the United States: An Update*, December 2020

Health Care Without Harm mobilizes the health care sector on decarbonization, resilience, and health equity





“Equitable community resilience is achieved through intentional engagement of residents and community leaders, sustained collaborative partnerships, and decision making that prioritizes social and physical infrastructure. To achieve this, health institutions must be reimagined – not simply as decarbonized versions of themselves, but as anchor institutions within healthier, more resilient, and more equitable communities.”



Health Professionals in Action



The **Nurses Climate Challenge** is a national campaign to mobilize nurses to educate 50,000 health professionals on the impacts of climate change on human health. A collaboration between Health Care Without Harm and Alliance of Nurses for Healthy Environments.



Health Care Without Harm's **Physician Network** supports emerging and established physician leaders in leveraging their influence and expertise to advance the growing health care sustainability movement and to create climate-smart health care. The Physician Network brings physicians together to share best practices and to inspire one another in advocating for a sustainable and healthy future.



CASE STUDIES: Hospitals improving health access and addressing health inequity through transportation solutions

- Access to transportation is a critical health-related social need, yet shuttle buses that hospitals use to bring patients and staff to facilities and around their campus run on diesel
- University of California San Francisco
 - Electrified their bus fleet, reducing emissions and improving health
 - As the electric fleet grows, buses can use their large batteries as backup power instead of the grid - creating resilient power for facilities
- Rochester Regional Health (NY)
 - Installed bike infrastructure and EV charging stations and are hosting a low-cost EV car sharing program for the community
- Inova Health (VA)
 - Installed EV infrastructure and created a transit pass that gives employees access to 12 different transit systems in their region to expand ridership and reduce traffic and pollution



CASE STUDY: Housing support, food pharmacy, and Nubian Square Market – Boston Medical Center

- Housing instability and food insecurity are critical health-related social needs
- Boston Medical Center
 - Invested nearly \$7 million to support 12 partner projects for housing stabilization
 - Provided a \$1 million interest free loan to partner Nuestra Comunidad to outfit a community market in Boston’s Nubian Square to provide access to healthy food in a medically underserved community
 - Created 2,658 sq ft rooftop farm that grows 25 crops and produces 5,000+ pounds of produce annually for patients, cafeterias, employees, and food pantry
 - Installed solar panels in Boston using IRA funds and is offering “clean energy prescriptions” to low income patients to offset their monthly electricity bill.





NATIONAL ACADEMY of MEDICINE
**ACTION COLLABORATIVE ON
DECARBONIZING THE
U.S. HEALTH SECTOR**

The Climate Collaborative provides a neutral platform for its participants to align around collective goals and actions for decarbonization, based on evidence, shared solutions, and a commitment to improve health equity. Members of the Climate Collaborative represent health and hospital systems, clinicians, private payers, biopharmaceutical and medical device companies, health care services, health professional education, academia, nonprofits, and the federal government.

The Climate Collaborative's work focuses on **health care supply chain and infrastructure; health care delivery; health professional education and communication; and policy, financing, and metrics.**



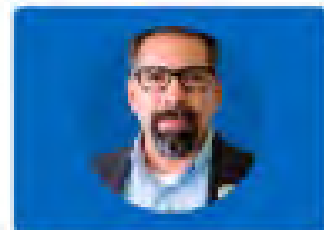
ENVIRONMENTAL JUSTICE

WHITE HOUSE ENVIRONMENTAL JUSTICE ADVISORY COUNCIL

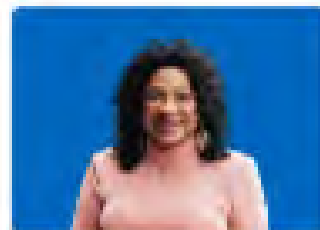
"The President and I are committed to addressing environmental justice and environmental injustice in everything we do. Because we know we cannot achieve health justice, economic justice, racial justice or educational justice without environmental justice. And we are confident that the work you do as members of this Council will help our administration help Americans across our country. We need your insight, your expertise, your lived experience. We need your ideas and your recommendations. But most of all, we need you, period."

REMARKS BY VICE-PRESIDENT KAMALA HARRIS AT THE INAUGURAL MEETING OF THE WHITE HOUSE ENVIRONMENTAL JUSTICE ADVISORY COUNCIL ON MARCH 22, 2021

Members of the White House Environmental Justice Advisory Council



ANGELO LOGAN



BEVERLY WRIGHT, PHD



CARLETTA TILOUSI



Administration | [Press](#)

ENVIRONMENTAL JUSTICE

JUSTICE40

A WHOLE-OF-GOVERNMENT INITIATIVE

"We'll create good jobs for millions of Americans...and we'll do it all to withstand the devastating effects of climate change and promote environmental justice."

PRESIDENT JOE BIDEN, 2022 STATE OF THE UNION

What is the Justice40 Initiative?

For the first time in our nation's history, the Federal Government has made it a goal that 40 percent of the overall benefits of certain Federal investments flow to disadvantaged communities that are marginalized, underserved, and overburdened by pollution. President Biden made this historic commitment when he signed Executive Order 14008 within days of taking office.

What kinds of investments fall within the Justice40 Initiative? The



Administration | [Press](#)

BRIEFING ROOM

FACT SHEET: Inflation Reduction Act Advances Environmental Justice

AUGUST 17, 2022 • STATEMENTS AND RELEASES

Most Significant Climate Legislation in U.S. History Delivers for Overburdened Communities

By signing the Inflation Reduction Act, President Biden is delivering on his promise to build an economy that works for working families, including communities that have been underinvested and underserved for too long. President Biden and Congressional Democrats beat back special interests to pass this historic legislation that lowers energy costs, advance environmental justice while building a cleaner future, and grows the economy from the bottom up and the middle out.

For far too long, communities across our country have faced environmental injustices, bearing the brunt of toxic pollution, enduring underinvestment in infrastructure and critical services, and suffering disproportionate impacts

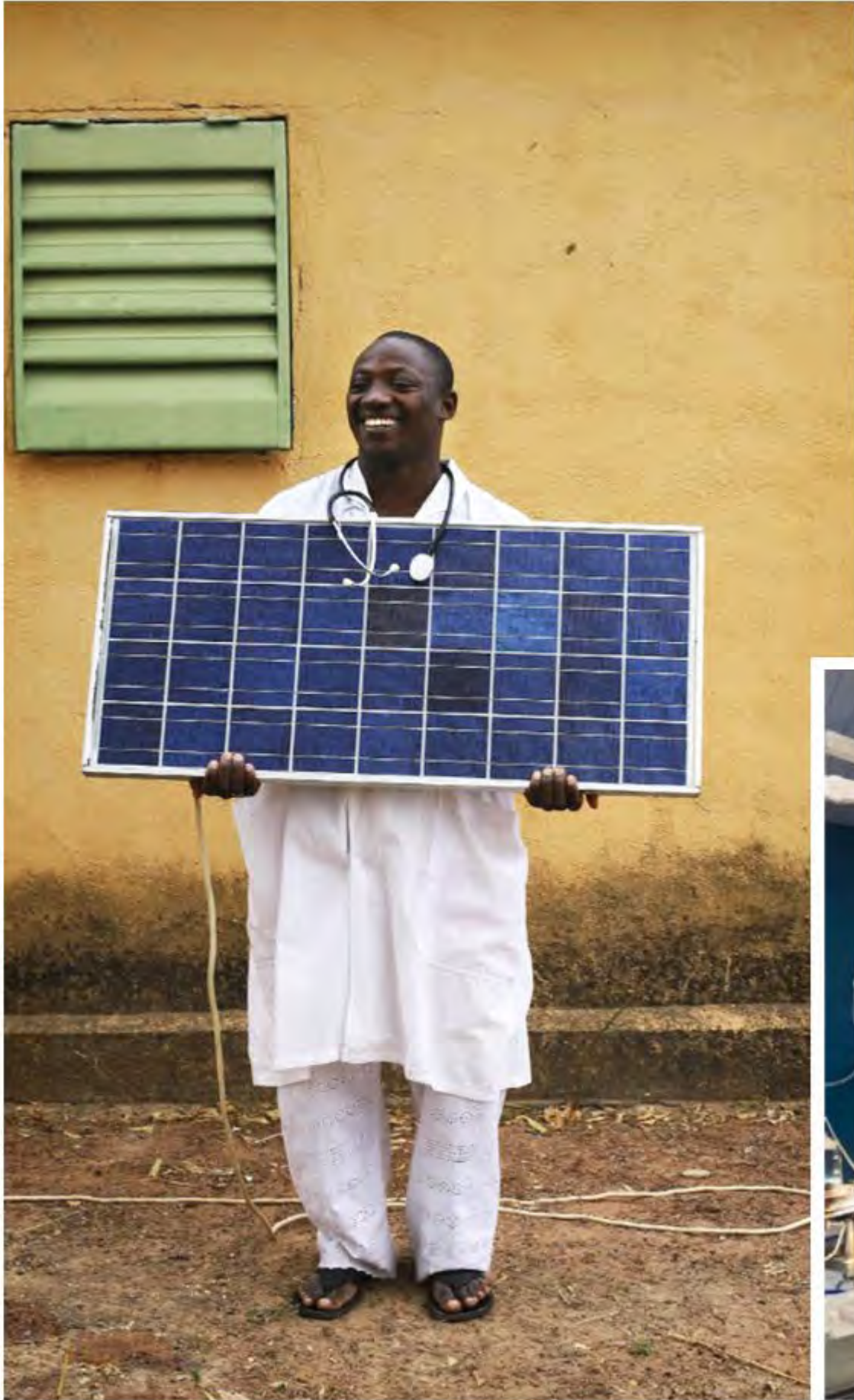


Photo Credits: SELCO Foundation, The Energy Nexus Network, Health Care Without Harm



UNIVERSAL HEALTH COVERAGE

COVERAGE



Partnering with Local Communities



David Padgett, PhD

Associate Professor of Geography and
Director of Geographic Information Sciences
Tennessee State University

Bright Spot: Fairmount Indigo CDC Collaborative



Kendra Beaver

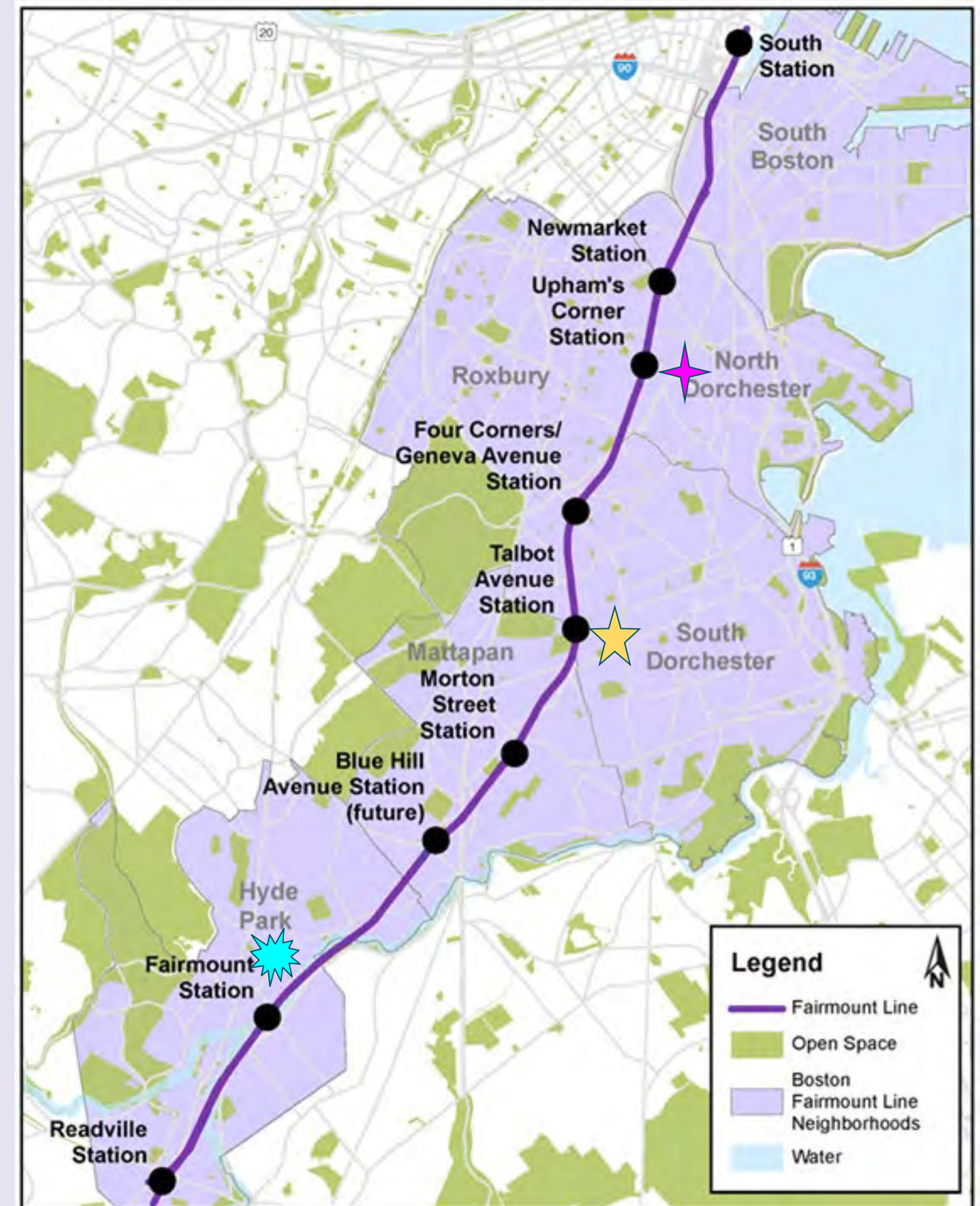
Climate Justice Coordinator

Fairmount Indigo CDC Collaborative (FICC)

Who is the Fairmount Indigo
CDC Collaborative (FICC) &
what do we do?

Fairmount Indigo CDC Collaborative -
**Group of three Community
 Development Corporations (CDCs) along
 the Fairmount Line in Boston, MA:**

1. Codman Square NDC ★
2. Dorchester Bay EDC ✨
3. Southwest Boston CDC ✨



FICC's Goals



1. Collective political power



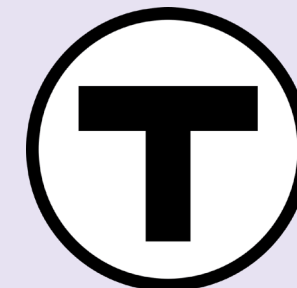
2. Economic and wealth-building opportunities



3. Transit-oriented affordable housing development



4. Sustainability, climate justice, and health equity



5. Equitable public transit

Then...

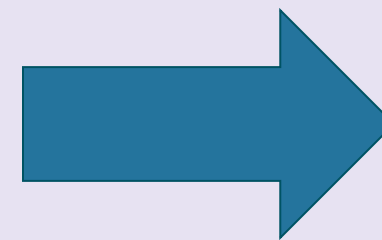
Formed in 2004 around a transit equity campaign to improve the Fairmount Line → Successfully organized to get 5 new stops on the line!

& Now!

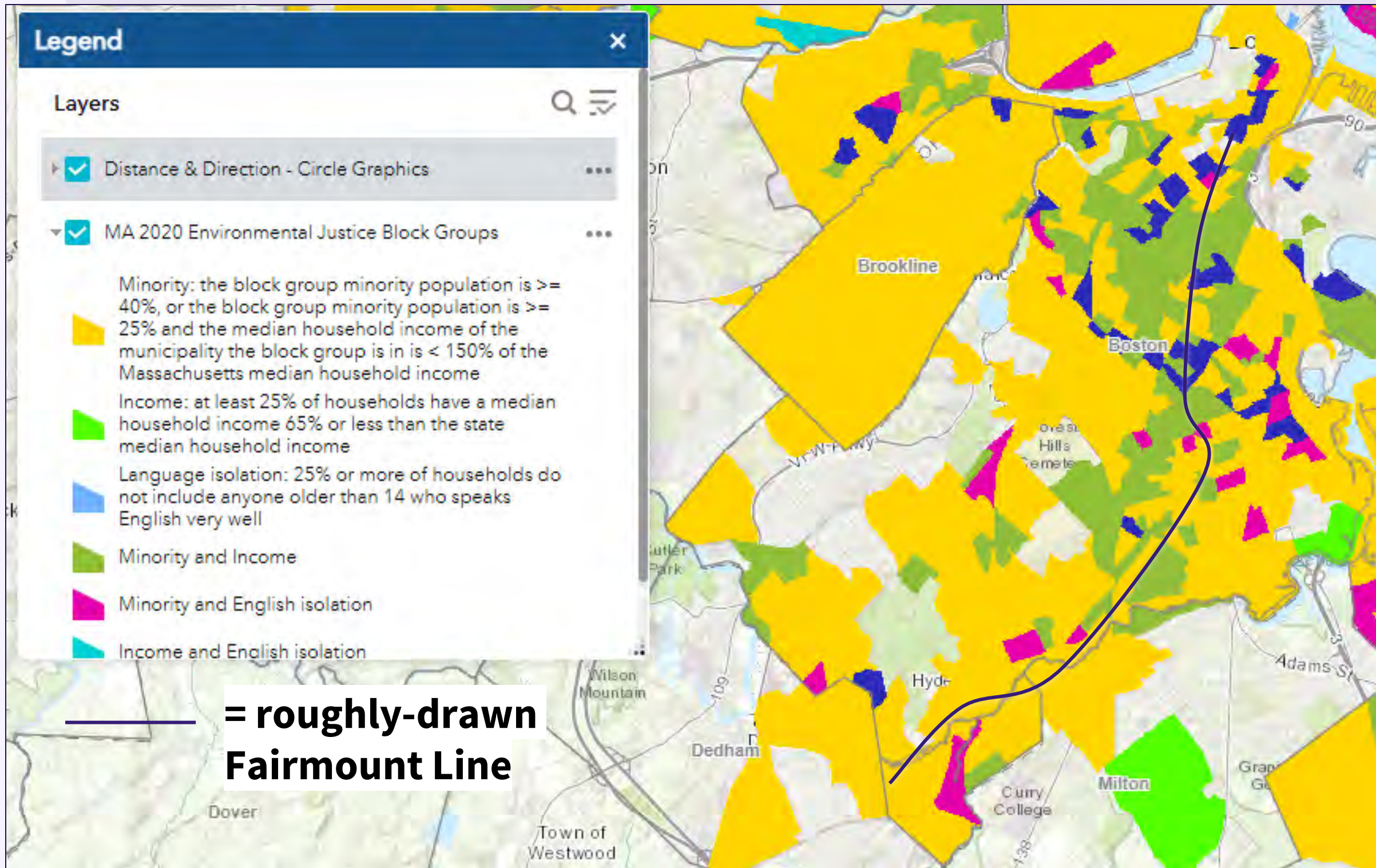
Organize & advocate for climate justice and health equity in our neighborhoods and beyond thru organizing & policy advocacy!



Fairmount stops rally in early 2000s



Advocacy Training Series hosted by FICC in 2023



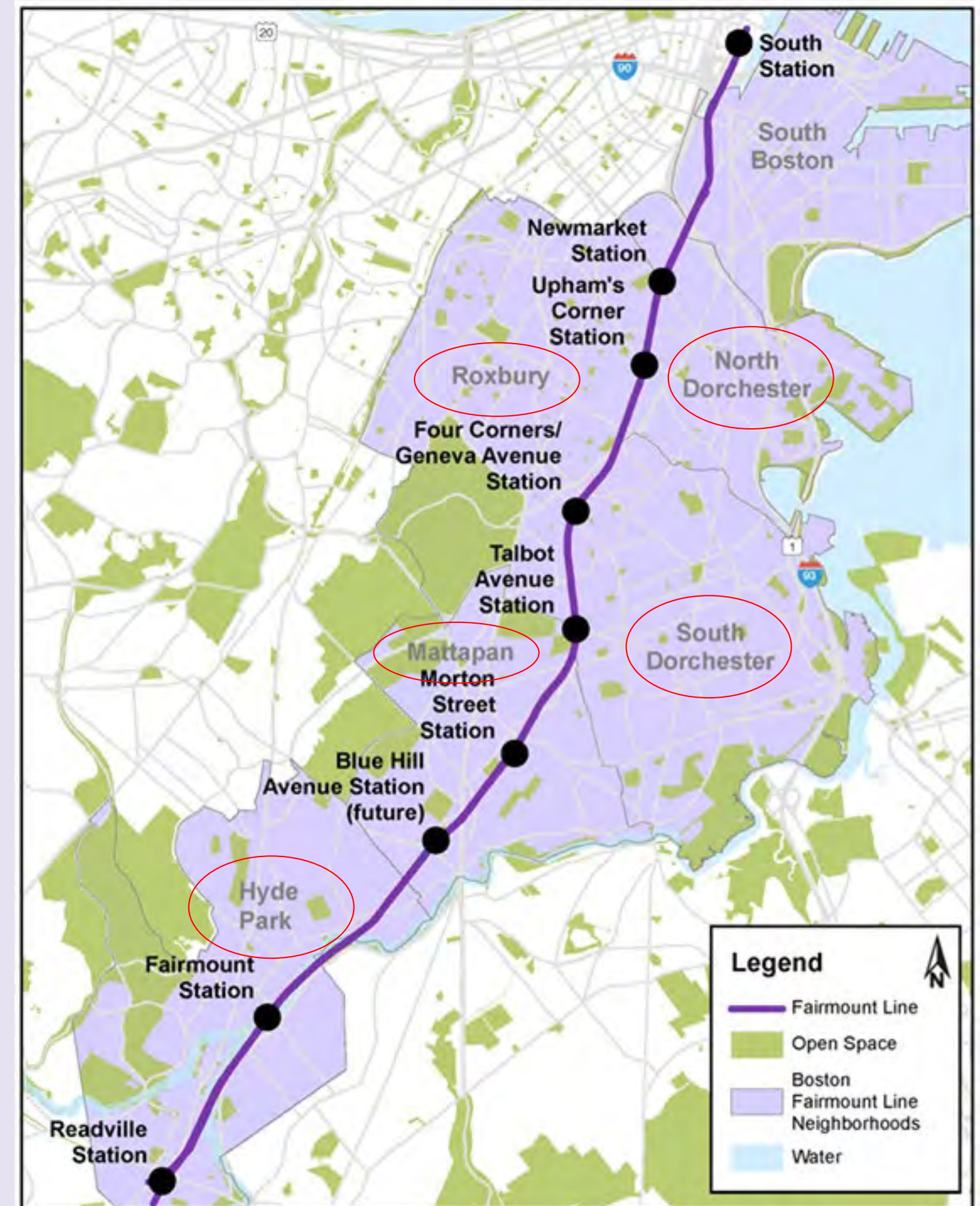
Environmental Justice Communities Along the Fairmount Line

The areas along the Fairmount Line are environmental justice communities.

Source: These data were obtained from <https://www.mass.gov/info-details/massgis-data-2020-us-census-environmental-justice-populations>

Fairmount Corridor - The group of neighborhoods through which the Fairmount Line travels: primarily Dorchester, Roxbury, Mattapan, and Hyde Park. They are primarily immigrant, BIPOC, LMI communities.

1/5 of the population of Boston – 83 percent of whom are Black or Latinx – lives within 1/2 mile of the line



The Fairmount Line

Some background

- 9-mile long MBTA commuter rail (CR)
- The only CR that starts & ends within the City of Boston
- 9 stations total
- Trains come every 45 mins
- Fueled by diesel
- All-time high ridership this May at 130% pre-Covid levels



How does
climate change
impact the
Fairmount
Corridor?

How climate change impacts the Fairmount Corridor



1. Extreme weather events like storms
2. Intense heat islands
3. Flooding
4. Air pollution



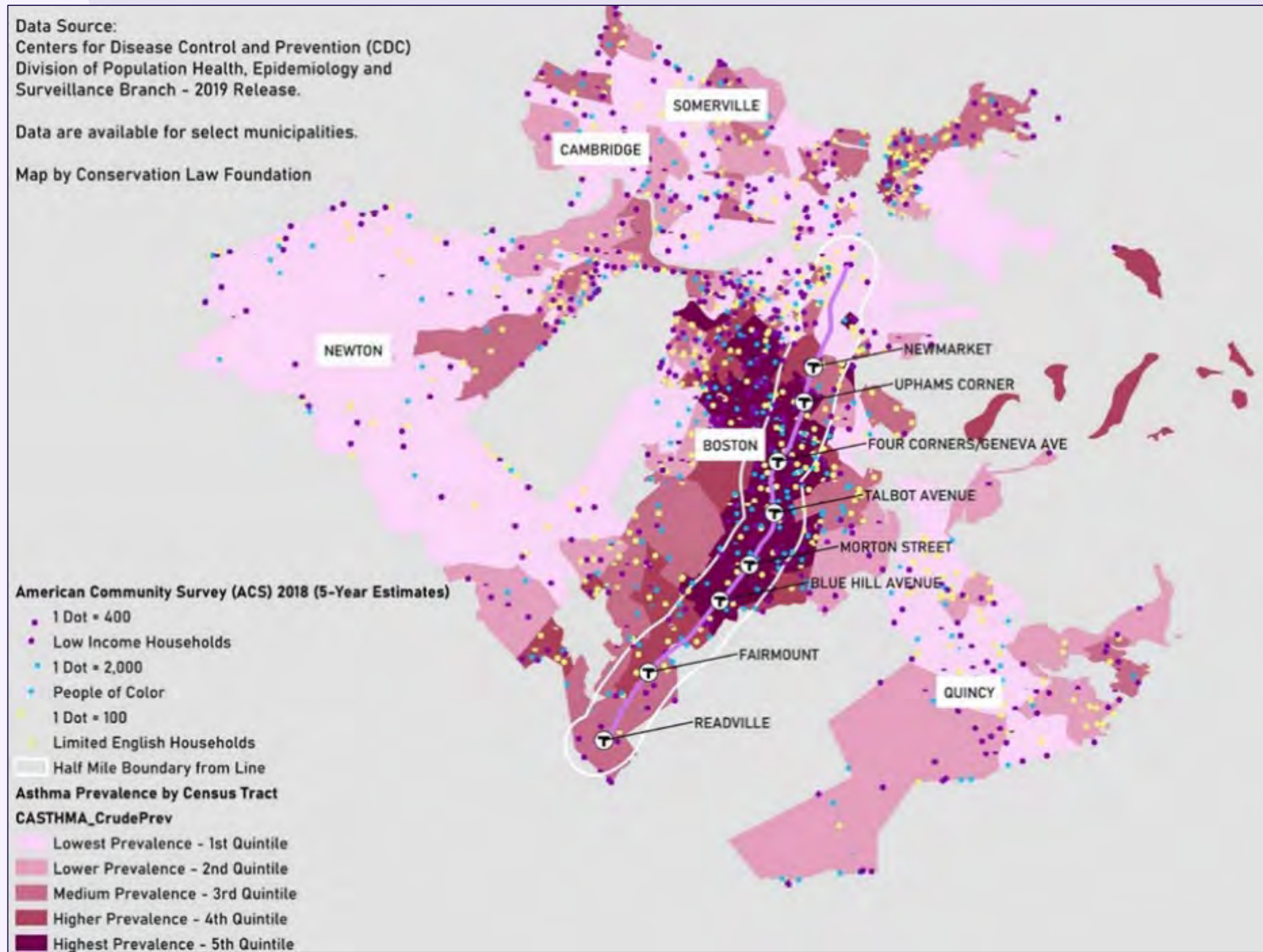
“On average, residents of color in Massachusetts are exposed to pollution from vehicle emissions that are 26 to 36 percent higher than the exposure of white residents.”

Source: [*Inequitable Exposure to Air Pollution from Vehicles in Massachusetts*](#), Union of Concerned Scientists

Data Source:
Centers for Disease Control and Prevention (CDC)
Division of Population Health, Epidemiology and
Surveillance Branch - 2019 Release.

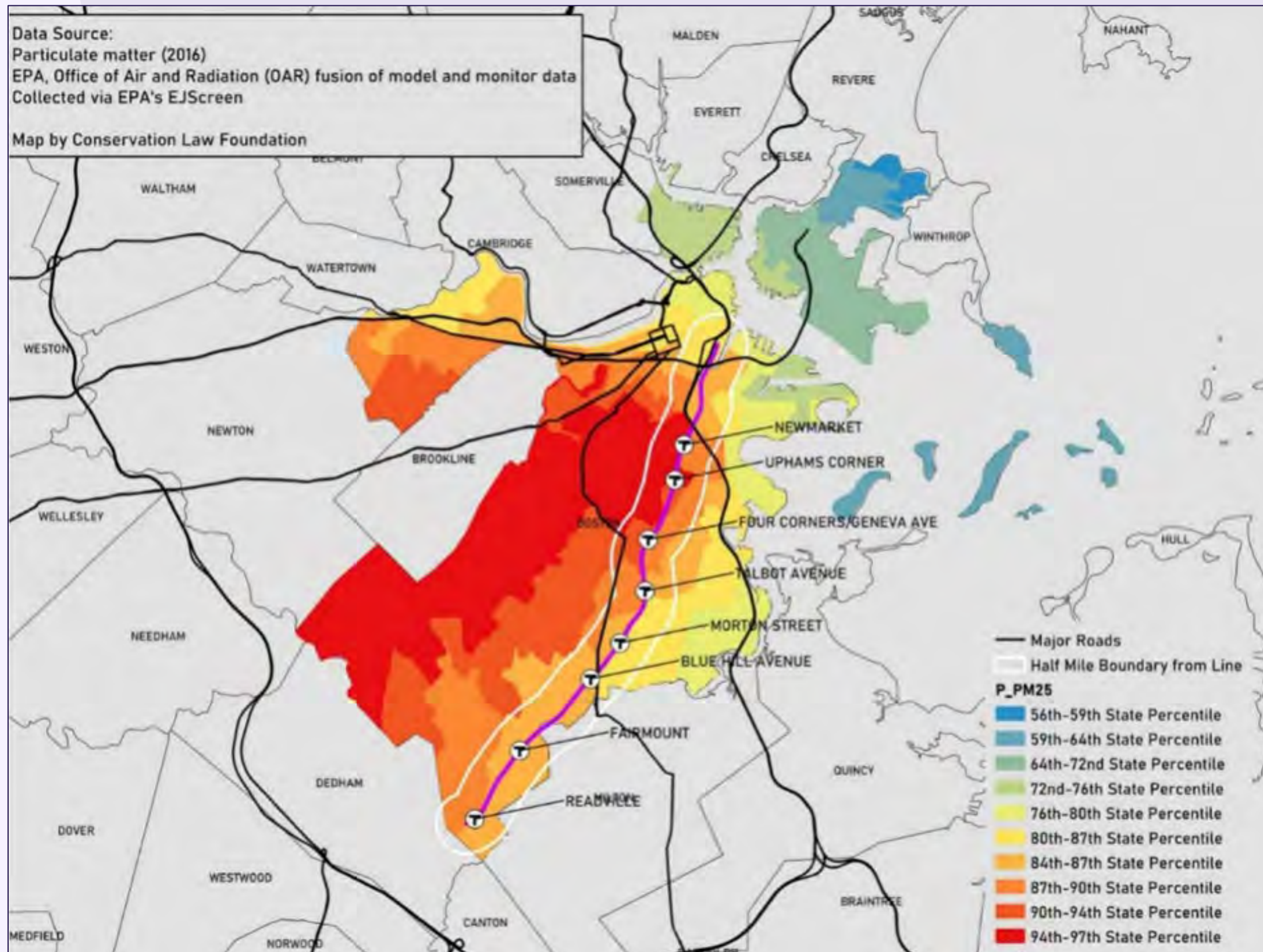
Data are available for select municipalities.

Map by Conservation Law Foundation



Asthma Prevalence Along the Fairmount Line

Source: [*A Better Fairmount Line: Rapid, Reliable Transit for
Dorchester and Mattapan*](#), Transit Matters



Particulate Matter Along the Fairmount Line

Source: [*A Better Fairmount Line: Rapid, Reliable Transit for Dorchester and Mattapan*](#), Transit Matters

A campaign for climate
justice & health equity:

A Better

Fairmount Line



Greater Four Corners



Action Coalition



Our campaign demands:

1. Full electrification of the Fairmount Line
2. Trains every 7.5 minutes on-peak and every 15 minutes off-peak
3. Subway fares (\$2.40) at *all* stations (Readville Station riders currently have to pay \$7.00)
4. Operation at the same hours as the city's subway
5. Free transfers to all other trains and buses
6. Two additional stations to be built to fill gaps on the line
7. ADA-compliant platforms at all stations

Base-Building

Chatting with Fairmount Line Riders



The Commonwealth of Massachusetts

In the One Hundred and Ninety-Second General Court
(2021-2022)

An Act establishing rapid transportation and electrification for the Fairmount corridor.

Be it enacted by the Senate and House of Representatives in General Court assembled, and by the authority of the same, as follows:

1 SECTION 1. Within 180 days following the effective date of this act, the Massachusetts
2 Bay Transportation Authority and operator of commuter rail service shall ensure frequent and
3 affordable service on the Fairmount Commuter Rail Line, which shall be renamed as the
4 Fairmount/Indigo Line. For the purposes of this section, "frequent and affordable service" shall
5 require: (i) not fewer than three train-sets dedicated to Fairmount/Indigo Line service; provided
6 that such train-sets shall be specially wrapped and marked as Fairmount/Indigo Line trains; and
7 provided further, that such train-sets shall not be diverted from Fairmount/Indigo Line service for
8 any purpose except maintenance; (ii) enhanced headways during peak hours; (iii) the ability to
9 pay for fares for Fairmount/Indigo Line service with fare media including, but not limited to,
10 CharlieCards or its equivalent successor product, M7 Passes, S-Cards, Youth Passes, and other
11 discounted fare medium available to people with disabilities, seniors, and students; (iv) fares
12 levied at the same rate charged to ride the subway network, with free transfers to connecting bus
13 lines and to the Red and Silver Lines at South Station; (v) bus service at Fairmount/Indigo Line

State-Level Advocacy
S.2402/H.3908
An Act Improving Rail
Service on the
Fairmount Commuter
Rail Line

Gubernatorial Pressure

TELL GOVERNOR HEALY THE FAIRMOUNT LINE COMMUNITY DEMANDS:

Electrification now!



No more air pollution from the diesel engines that's toxic to our health, pollute our communities & causes climate change!



Trains every 15 minutes or better!

Rapid, reliable transit for the Fairmount Corridor!



FIGHTING FOR TRANSIT EQUITY
ACCESS TO JOBS

Local Benefits of A Better Fairmount Line



Removes a large source of air pollution from already-suffering neighborhoods

Creates a convenient transit option to get people out of crowded buses and traffic



Mitigates future harms from climate change on EJ neighborhoods

Statewide Benefits of A Better Fairmount Line



Serves as a pilot for the electrification of the entire system

Immediately reduces the state's air pollution levels



Brings MA closer to fossil-fuel-free infrastructure & climate goals

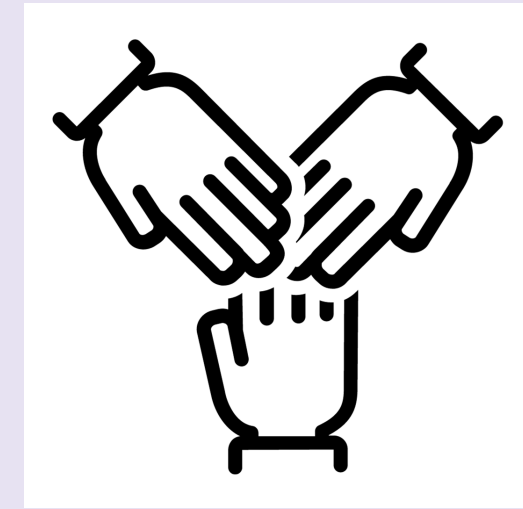


What's on the
Horizon?



Bill → Law?

Waiting for the Committee
to report out the bill



Coalition-building

Continue connecting with
Fairmount Line riders & Fairmount
Corridor residents



Launch Gubernatorial
Campaign

Urgent pressure needed!

THANK YOU!

More info:



[Linktr.ee/fairmountcollab](https://linktr.ee/fairmountcollab)

Poll Questions



- Where do the intersections of climate, health, and equity show up in your community?
- What learnings can you take from today's discussion and apply to your own work or the work of those you support?
- What resources does your community need?

Thank you!

- Today's slides and a recording of this webinar will be posted online; a link will be provided in the post event email.
- Please take the brief evaluation poll that will appear on your screen shortly.
- Thank you for your time and participation!